



*jordan fishwick*

Yardsley Lane Furness Vale High Peak





## Yeardsley Lane Furness Vale High Peak SK23 7PN

Guide Price £370,000



### The Property

Boasting a wonderful open aspect with views over Furness Vale Bowling Green, a superbly presented three bedroom detached bungalow. Manageable gardens with ample driveway parking and a detached garage. Guaranteed to impress and ready to walk into, this beautiful property has to be seen. Comprising: entrance porch, inner hall, re-fitted dining kitchen, 17ft living room with patio doors, three bedrooms and a shower room with contemporary suite. Pvc double glazing and gas central heating. Useful garden room overlooking the lawn. Perfect location within easy reach of Furness Vale railway station and offered for sale with No Chain.





- Detached True Bungalow
- Overlooking a Bowling Green
- Manageable Gardens
- Ample Driveway Parking and Detached Garage
- Three Bedrooms
- Beautifully Presented Throughout
- No Chain
- Convenient Location In Furness Vale
- Pvc Double Glazing and Gas Central Heating

Postcode

SK23 7PN

EPC Rating

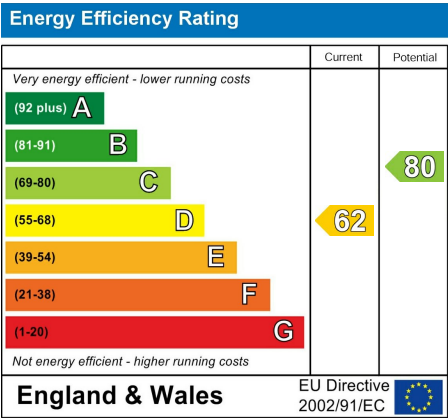
D

Local Authority

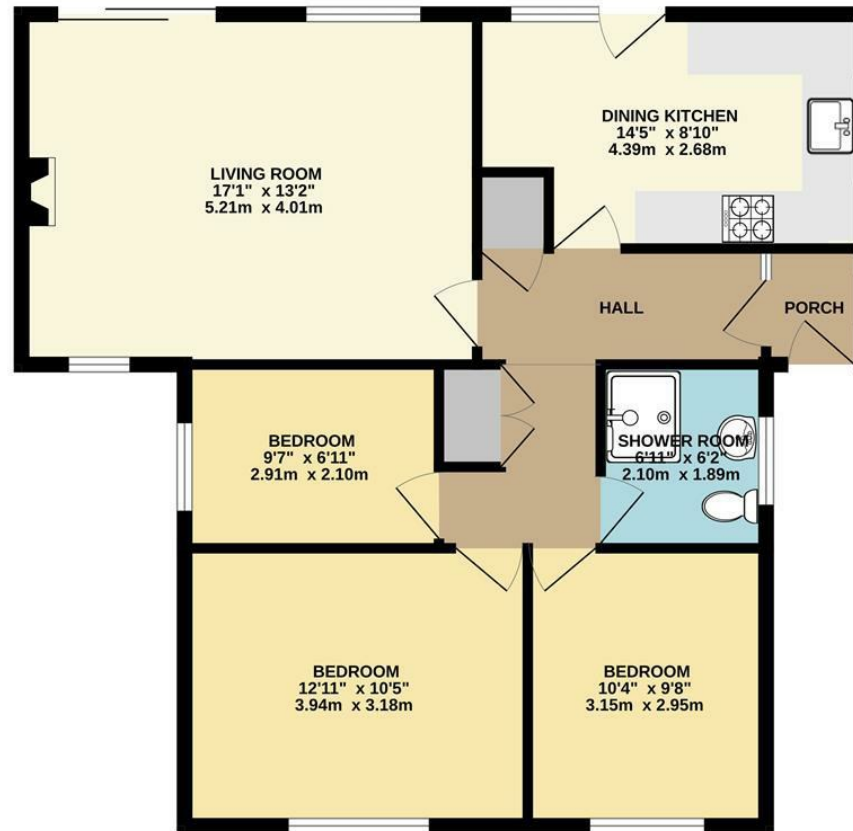
High Peak

Council Tax

D



## GROUND FLOOR



Whilst every attempt has been made to ensure the accuracy of the floorplan contained here, measurements of doors, windows, rooms and any other items are approximate and no responsibility is taken for any error, omission or mis-statement. This plan is for illustrative purposes only and should be used as such by any prospective purchaser. The services, systems and appliances shown have not been tested and no guarantee as to their operability or efficiency can be given.  
Made with Metropix ©2025



These particulars are believed to be accurate but they are not guaranteed and do not form a contract. Neither Jordan Fishwick nor the vendor or lessor accept any responsibility in respect of these particulars, which are not intended to be statements or representations of fact and any intending purchaser or lessee must satisfy himself by inspection or otherwise as to the correctness of each of the statements contained in these particulars. Any floorplans on this brochure are for illustrative purposes only and are not necessarily to scale.

Offices at: Chorlton, Didsbury, Disley, Hale, Glossop, Macclesfield, Manchester Deansgate, Manchester Whitworth Street, New Mills, Sale, Wilmslow and Withington

14 Market St, Disley, Cheshire, Stockport SK12 2AA

01663 767878

disley@jordanfishwick.co.uk

www.jordanfishwick.co.uk